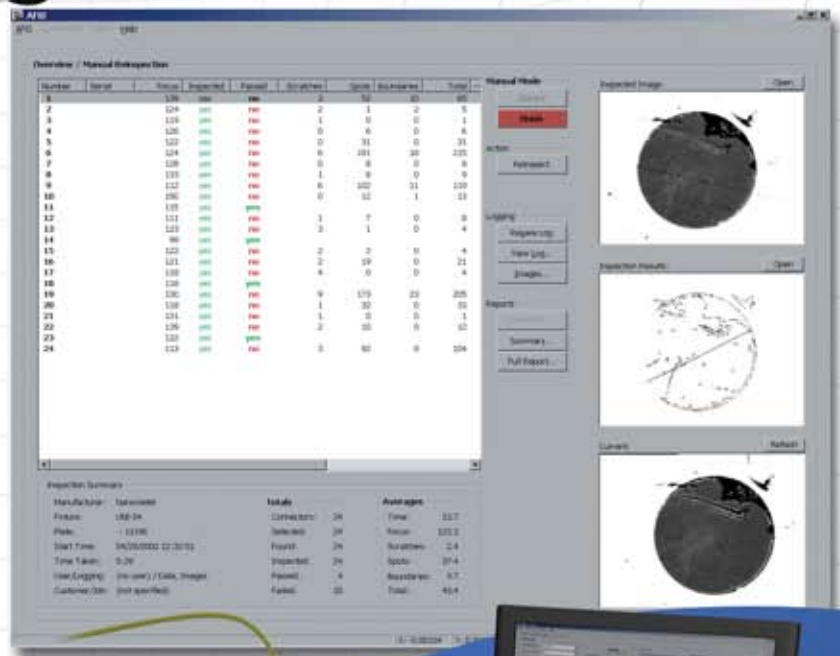
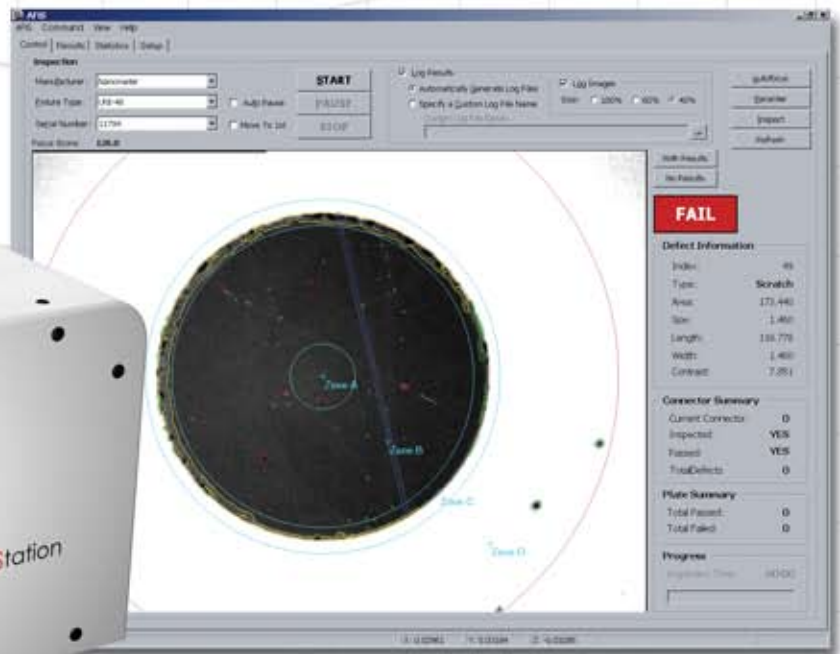


AFiS jr™

Automated Fiber-optic Inspection Station



Nanometer Technologies presents the AFiS jr™

A fully integrated solution for accurate, repeatable fiber inspection.

The AFiS jr™ is a machine vision fiber-optic connector analysis system that will detect fiber defects such as scratches, pits, and epoxy rings.

The AFiS jr™ can accommodate all connector types including: MT (4,8,12,24 fibers), MT-RJ, LC, MU, ST, SC,FC, and APC.

Utilizing powerful inspection software, AFiS jr™ can quickly and accurately detect defects smaller than a single micron on fiber ends - even when there is poor image contrast between the defect and it's background.

The AFiS system archives information that shows details and images of individual inspections as well as giving the user the ability to provide customized quality control reports.

