

AFiS™

Automated Fiber-optic Inspection Station

Test your connectors without removing from the polishing fixture.

Accommodates Seiko Giken, Seiko Instruments, Domaille, and Nanometer Technologies fixtures. The AFiS is compatible with most other polishing machine's fixtures as well.

Inspects for scratches, pits, epoxy rings, ect. with size and quantitative information.

Inspect 24 connectors in about 5 minutes.

Fixture Wizard software let's users design camera paths for inspection of custom fixtures.

Store results (including images) in a database. Create statistical analysis's for connector batches and archives for a month(s) worth of results.

Inspect up to 60 connectors at a time.

AFiS Software:
Auto Centering System
Auto Focus
Auto Inspection Routine

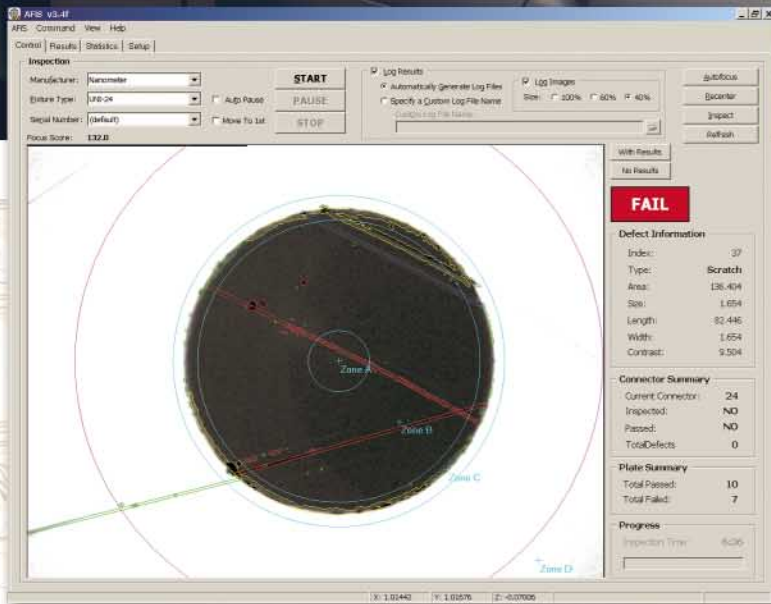


Patent Pending

NANOMETER  TECHNOLOGIES

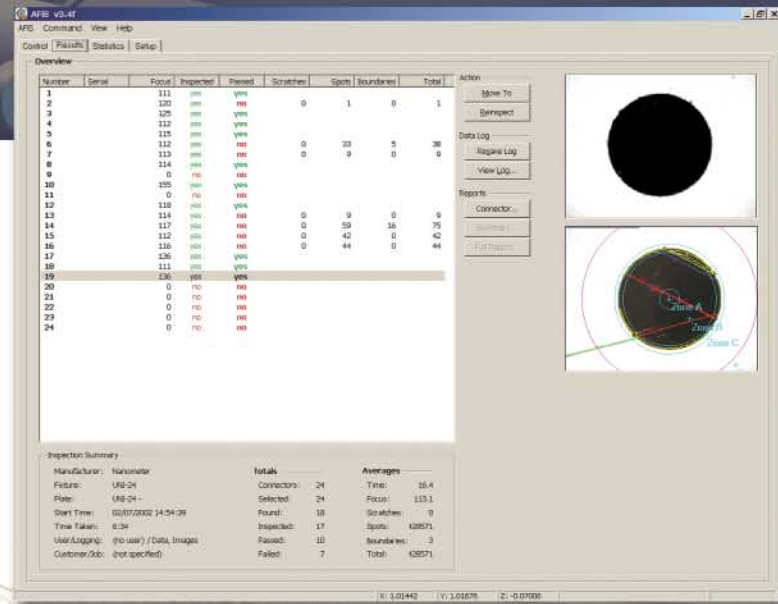
2501 Golden Hill Road • Paso Robles, CA 93446 • Tel: (805) 226-7332 • Fax: (805) 226-8753 • www.nanometer.com

The AFIS™ Software



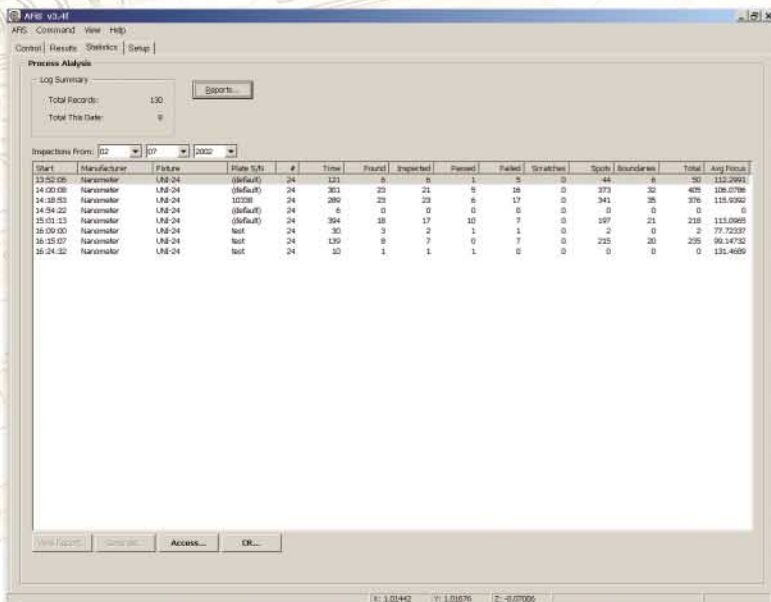
CONTROL TAB:

The AFIS™ software is a scientific analysis system. Images imported into the software are inspected for scratches, pits, epoxy rings, etc with quantitative information. Pass/Fail results are set to industry standards. The analysis criteria can be adjusted to match your customers' specific needs. Software will auto center and auto focus the camera, then automatically inspect connector end face. Software can inspect a connector in 10-12 seconds or 24 connectors in about 5 minutes.



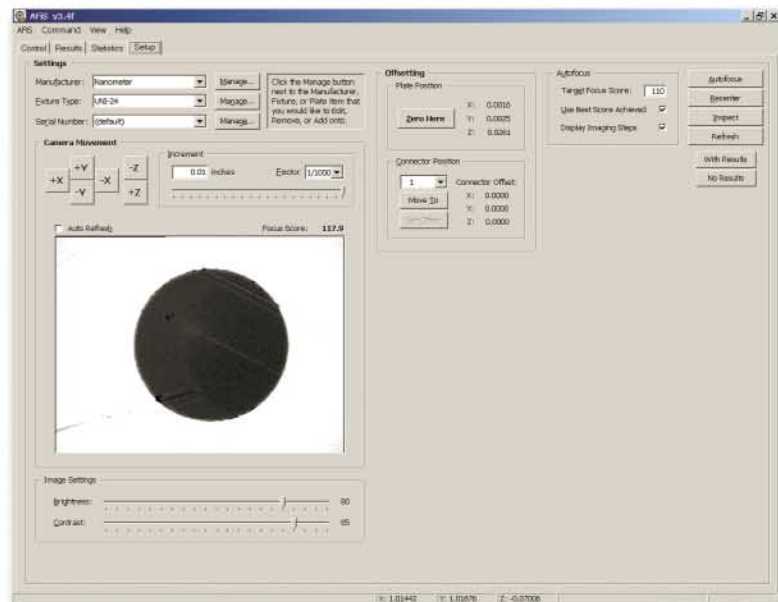
RESULTS TAB:

The results window provides the user with the inspected results of the fixture and connectors being tested. The test data can be sorted by any of the headings in the inspection results window (I.E. click on the scratches header and the results will be sorted by the number of scratches from least to most , click again and the results will sort by the most to the least scratches).



STATISTICS TAB:

The statistics window provides users with a very powerful tool for analyzing data taken in the AFIS system. These statistics include statistical data from past inspection processes and data that can be sorted by time, fixture type and plate information. All data can be saved in a database format (including the option to save all connector inspection images) for help with quality control.



SETUP TAB:

The Setup window let's users choose the manufacturer and polishing fixture that is to be inspected. For custom fixtures or fixtures not listed, users can create custom camera paths using the Fixture Wizard™ software.